

VISUAL HOME DESIGN MAGAZINE IMPACT

Modern Farmhouse

TAKE COMFORT TO
A NEW LEVEL **P.2**



Scandinavian

IMPROVING BY
SIMPLIFYING **P.14**



Mediterranean Luxe

LET WANDERLUST
BE YOUR GUIDE **P.8**



MASONITE.
Doors that do more.



INTRODUCE YOUR SPACE

WITH MASONITE DOORS

Every aspect of a home's architecture has the opportunity to make that ultimate statement for the homeowner. You may know what color the walls are going to be and what material the floors will be, but do you know how you are going to *introduce* your space?

Jase Frederick of the US Green Building Council notes that "[doors] are often overlooked as a key design element;" however, they are especially pivotal to the design of a home. Since they are the single original feature of a home that we are guaranteed to interact with every single day, we need to start looking at the door—*really looking at it*.

"The front door . . . is informed not only by the culture and the lifestyle of the people that are going to live there, but also by the architecture of the building."



EXTERIOR DOOR
Heritage Series,
Smooth Fiberglass
with Focus Glass

It starts with the front door. "The front door... is informed not only by the culture and the lifestyle of the people that are going to live there, but also by the architecture of the building," says Susan Carson, ASID member.

With a variety of offerings and styles, doors have the potential to make a big impact, especially considering how you want your home to feel. The same doors that make your home feel homey and comfortable will not be the same doors that feel like the entrance to an exotic escape. Masonite can provide every home with the optimal doors to make the statements you want for your home, no matter what trends you desire. We will explore three of the top 2018 trend in design to help you choose the best look for your space.



Modern Farmhouse

For those seeking to combine rustic looks and comfort.

P.2



Mediterranean Luxe

For anyone struck with wanderlust seeking a more personalized space.

P.8



Scandinavian

For the minimalists striving to cut back to the basics.

P.14

MODERN FARMHOUSE

Home-sweet-home gets contemporary in 2018.

We're not talking about picket fences and rooster motifs. This modern update that is creeping up in commercial spaces like shops, trendy restaurants and bars is about creating a refined rustic atmosphere that feels crisp and clean while remaining cozy and familiar. Modern Farmhouse utilizes open spaces, clean lines and antique accents so that your home can be comfortable without feeling stuffy or outdated.

You can reflect this trend by installing fixtures like farmhouse sinks, shiplap, open shelving and barn doors. Look for

crisp whites, mixed metals, distressed wood and greenery to bring the whole look together; however, according to designer Barbara Gilbert, "All the rules have been thrown out," so focus more on making your house feel like a home rather than following any strict guidelines. It's all about creating a tranquil space for you and your entire family to cherish. This is what "home" looks like.





VistaGrande, Smooth Fiberglass with SOL Grids

MODERN FARMHOUSE

“Freely mix the old with the new. In Modern Farmhouse, nothing is contrived.”

BARBARA GILBERT, Designer

KEY FEATURES

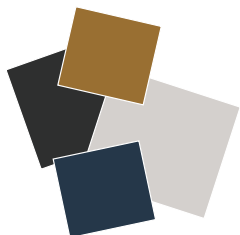


1. LIGHTING

Upgrade simple farmhouse household items like mason jars into a breathtaking DIY light fixture.

2. FLOORING

Whether new or revived wood floors, draw attention to rustic saw marks and wide planks with this natural flooring.



3. COLOR

Look for contrast to balance warm neutrals with crisp white interiors.

4. TEXTURE & MATERIALS

Install or salvage existing shiplap with a fresh coat of white paint throughout the entire home.

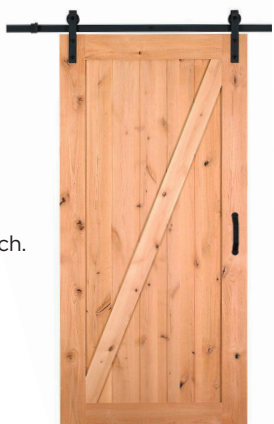


5. ACCENTS & DÉCOR

Incorporate the functionality of chalkboards by painting an entire wall or recycling a piece of old framed art.

6. UNIQUE CHARACTERISTICS

Install a barn door for an authentic farmhouse approach.



Heritage Series, Winslow, Molded Panel

Modern Farmhouse

Give your entire home the feel of the **Modern Farmhouse** trend with doors that pair traditional craftsman appeal with streamlined looks and updated materials.



FRONT DOOR
Heritage Series® Smooth
Fiberglass with Heartland® Glass



Shown in Oak Clear Coat

INTERIOR DOOR
Artisan Oak Wood
with Clear Glass



Shown in In The Navy, SW 9178

PATIO DOOR
VistaGrande® Smooth Fiberglass
with Craftsman SDL Grids



1 WELCOME YOUR GUESTS

Airy windows encased in gorgeous rustic woods showcase what's beyond the front door.

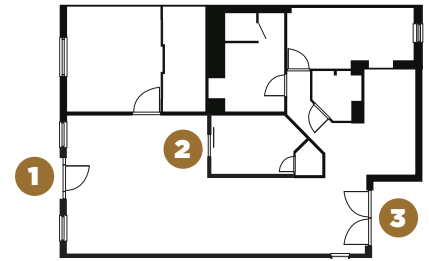
FRONT DOOR: VistaGrande, Fir Fiberglass with SDL Grids



DON'T STOP AT THE FRONT DOOR

Combine traditional craftsman appeal with modern methods for a seamless transition through every room

Capture the contemporary yet rustic look of this trend by choosing shaker panel fiberglass or natural wood doors throughout the home.



2 RUSTIC MEETS MODERN

Barn doors with streamlined panel designs instill a sense of the traditional while inviting contemporary vibes.

INTERIOR DOOR: Heritage Series- Winslow- Molded Panel



3 OPEN UP TO THE OUTDOORS

Make a statement with doors that highlight the backyard, combining nature with family time.

PATIO DOOR: VistaGrande- Smooth Fiberglass with SDL Grids

MEDITERRANEAN LUXE

If you want to bring the elegance of far-away lands to your own home, look no further.

The lands of Europe, Asia and Africa offer an undeniable sense of culture and glamour that can be reflected in the home. Showcase your own wanderlust with odes to your favorite countries using accents that come from your own travels and culture to create a story that is all your own and a space that shows it.

This trend offers a variety of ways to express yourself while celebrating influences from the vast multi-cultural

region of the Mediterranean. Look for familiar motifs to bring your home to life like Moroccan tiles, Greek cobalt blues and Italian wrought iron. Jewel-toned palettes offer hues rich in color and imagination that can be personalized to any taste. Balance grandiose furnishings with intricate details to feel like a ruler in your very own escape.





AvantGuard, Black Walnut Finish with Sienna Glass

MEDITERRANEAN LUXE

“It’s all about the feeling and experiences you had when buying pieces for your home that will tell your story.”

ELIAS KABABIE, Architect

KEY FEATURES

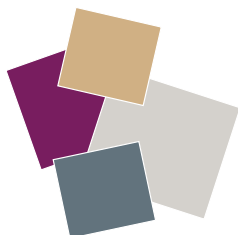


1. LIGHTING

Focus on gilded iron and suspension pendants for an alluring ambiance.

2. FLOORING

Terracotta tiles bring a depth of detail that only Mother Nature itself could surpass.



3. COLOR

Dare to mix rich jewel tones such as navy and fuchsia for a luxurious, glamorous look.

4. TEXTURE & MATERIALS

Intertwine wrought iron, grand archways and intricate tile work to create an enticing atmosphere.

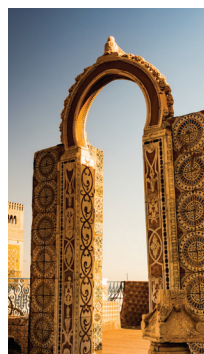


5. ACCENTS & DÉCOR

Tell the story of your travels by replacing paint and wallpaper with detailed tile art.

6. UNIQUE CHARACTERISTICS

Archways are a unique and distinctive focal point that reflect the rich history of this region.



Masonite Classics - 2 panel Roman Molded Panel

Mediterranean Luxe

Let your home embody the rich multicultural region of the **Mediterranean** with doors in vibrant colors and elegant woods.



Shown in Mahogany Clear Coat

FRONT DOOR

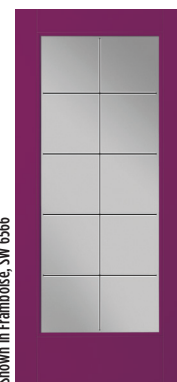
Le Chateau Mahogany
Round Top



Shown in Mediterranean, SW 7617

INTERIOR DOOR

2 Panel Roman



Shown in Framboise, SW 6566

PATIO DOOR

VistaGrande. Smooth Fiberglass
with Centennial 10, Glass



1 SET THE TONE

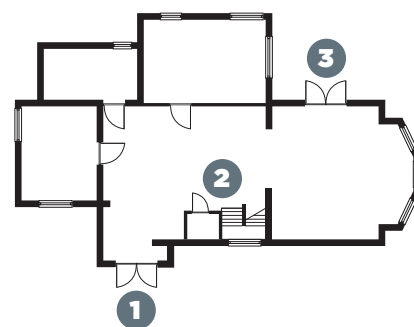
A front door with big personality makes the everyday feel like a getaway.

FRONT DOOR: Le Chateau Maple Torrefied Wood Arch-Top Panel (Shown as Double Door)

GO BEYOND THE FRONT DOOR

Create a home that radiates glamour with individual style beyond

Choose wood doors that feel hand crafted and use rich paint colors to create a global-inspired home throughout.



2 NO ROOM LEFT OUT

Give every room the special treatment with considerably-matched doors.

INTERIOR DOOR: Artisan Mahogany Wood Round Top with Morisco Glass



3 SURVEY YOUR KINGDOM

Doors with wide views open up your entire space to picturesque scenery.

PATIO DOOR: VistaGrande, Fir Textured Fiberglass with Clear Glass (Shown in French Roast Stain)

SCANDINAVIAN

Simple and practical doesn't have to be boring.

Fans of minimalism will appreciate this livable trend. With focuses on natural lighting, purposeful designs and a balanced way of life, Scandinavian is essential for anyone looking to be more mindful in their own lives. Combining practicality and simplicity, this lifestyle-turned-design is about "living with what you have," says trend forecaster Claire Walsh.

Showcase the "less is more" philosophy with functional furnishings that are comfortable and unpretentious like

soft-toned woods and plants, which clean the air and are proven to brighten people's moods. Clean and cozy whites balanced with versatile neutrals are a must. The trending Danish lifestyle 'hygge' has influenced Scandinavian by ushering the prominence of individual beauty to create a warmth of one's own; in other words, don't forget about the little things like personal artifacts and interests that makes your house a home. Utilize natural accent materials like wood and metal to add a pop of interest.





Artisan Maple Wood with Frosted Glass

SCANDINAVIAN

“It’s all about making the most of your daily life.”

CLAIRE WALSH, Trend Forecaster

KEY FEATURES

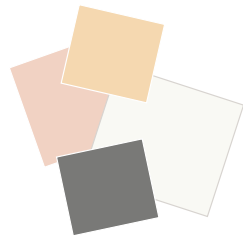


1. LIGHTING

Bring natural light to the forefront through windows and doors. For additional lighting, choose clean, simple light fixtures.

2. FLOORING

Use light wood and natural-colored flooring consistently throughout the home for a calming visual appeal.



3. COLOR

Create your sanctuary by pairing nature's neutrals with your own serene whites.

4. TEXTURE & MATERIALS

If it's found in nature, it fits in your home. Bring the outdoors in with light wood, rays of sunlight and natural materials.



5. ACCENTS & DÉCOR

Manifest the feeling of serenity in functional decor such as faux fur throws.

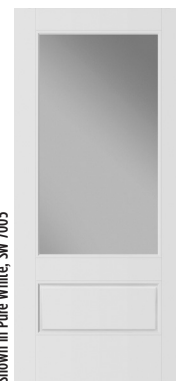
6. UNIQUE CHARACTERISTICS

All-encompassing of mind, body and soul, purpose is always considered with decor. Every piece is chosen with not only design in mind, but a holistic approach.



Heritage Series, Logan, Molded Panel

Windowed doors in neutral colors are a cozy staple of the **Scandinavian** trend since they allow natural light to enter any room and open up the space.



Shown in Pure White, SW 7005

FRONT DOOR

VistaGrande. Smooth
Fiberglass with Clear, Glass



Shown in Knotty Pine Clear Coat

INTERIOR DOOR

Knotty Pine Wood French
15-Lite with Clear Glass



Shown in Westchester Gray, SW 2849

PATIO DOOR

VistaGrande. Smooth Fiberglass
with Clear, Glass



1 ADMIRE THE ELEMENTS

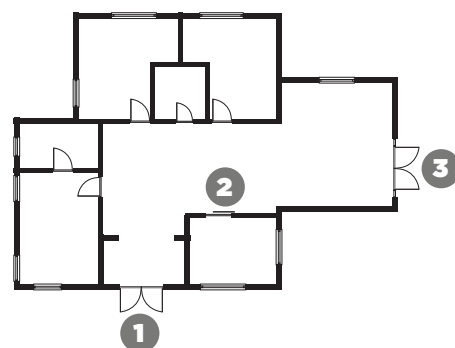
Alternate glass and wood panels in earthy tones for ultimate Scandinavian impact.

FRONT DOOR: La Chateau Fir Wood with Wide Rails and White Laminate Glass

COHESIVE SPACE INSIDE & OUT

Improving your entire home is just a matter of simplifying

Pair light-toned wood doors with dark neutral colors to capture the natural spirit of this lifestyle throughout the home.



2 BRING THE OUTDOORS IN

Even inside doors should allow light to enter each room and make the entire house feel like a whole.

INTERIOR DOOR: Poplar Wood French 3-Lite with Clear Glass



3 ENCOURAGE NATURAL CURIOSITY

Mesh your home and the outdoors with patio doors that ensure a brilliant view for everyone to enjoy.

PATIO DOOR: VistaGrande. Smooth Fiberglass with Clear Glass





THE IMPACT OF THE DOOR ON DESIGN

Make the most of every inch of your home to create a space and statement that is entirely yours. The experiences we all have with doors are essential to how we interact with our home and can influence the way we think about it. Though trends may change, the lasting parts of our homes can stay as a testament to the basic ways we want our homes to feel. Whether the influence comes from around the globe or our own personal philosophies, each

door is an opportunity to become more in touch with our homes and our lifestyles. They set the mood from the very front that hopefully gives a clue into our style and, ultimately our lives.

By continuing that mindfulness throughout the rest of the home, you have the chance to unify the entire house so that it does indeed feel like a home and an eternal statement of you.



1-800-663-DOOR

9am to 5pm / Monday through Friday, EST

masonite.com

Masonite, Open to extraordinary, AvantGuard, Barrington, Belleville, Berkley, Bolection, Centennial 10, Cheyenne, Cruz, Focus, Hamel, Heritage Series, Lincoln Park, Logan, Melrose, Optimus, Riverside, Sienna, VistaGrande, West End Collection, and Winslow, are trademarks of Masonite International Corporation. Doors made using patents 6,588,162 (US), 5,543,234 (US) and 2,151,989 (CA). Additional Patents Pending. Our continuing program of product improvement makes specification, design and product detail subject to change without notice.

© 2018 Masonite International Corporation