

TECHNICAL DATA SHEET

DS-101-1

N Series Non Handed Door (Our Standard Door - Swingerdoor) 1 3/4"

1. Doors shall be manufactured by Mesker Door Incorporated and designated as SwingerDor 1 3/4".

N() 420-20 gauge 1 3/4 SwingerDor

N() 418-18 gauge 1 3/4 SwingerDor

N() 416-16 gauge 1 3/4 SwingerDor

() = Core designation: "P" - Polystyrene, "H" - Honeycomb, "F" - Fiberboard, or "U" - Urethane.

2. Core material shall be Polystyrene, Honeycomb, Fiberboard or Urethane as called for on plans.

3. Doors shall be full flush constructed of two face sheets of 16, 18 or 20 gauge cold rolled steel and A60, stretcher-levelled quality of flatness or A60 galvanized steel.

4. Doors shall have neat hemmed vertical edge seams mechanically interlocked for maximum structural integrity. Seamless doors available when required by filling or welding edge or seam. (Designated by an "S" in the above nomenclature.)

5. Doors shall have 7 gauge steel hinge reinforcements with 3 projection welds above and 3 below each hinge mortise. The top hinge reinforcement shall extend to the top of the door and have 3 additional projection welds on the extended leg.

6. Doors shall have a box type closer reinforcement factory installed to reinforce both sides of doors.

7. Doors shall have 16 gauge top and bottom channels welded to door skins on 2" centers.

8. Doors shall be mortised and adequately reinforced for all hardware. Mortised hardware reinforcements shall be drilled and tapped at the factory. Surface applied hardware shall be field drilled by others.

LABEL SWINGERDORS 1 3/4" - 16, 18 OR 20 GAUGE..

SWINGERDORS ARE AVAILABLE WITH UL, WHI AND FACTORY MUTUAL LABELS AS SHOWN BELOW:

CORE MATERIAL	POLYSTYRENE	HONEYCOMB	URETHANE	FIBERBOARD
GAUGE	16, 18 & 20 GAUGE	16, 18 & 20 GAUGE	16 & 18 GAUGE	16 & 18 GAUGE
LABEL	A, B & C	A, B, C, D & E	NOT RATED	A, B, C, D & E
HEAT RISE RATING	NONE	NONE	N/A	250° PYRODOR
MAXIMUM SIZES AVAILABLE	SINGLE: 4080 PAIR: 8080	SINGLE: 4080 PAIR: 8080	N/A	SINGLE: 4072 PAIR: 8072

NOTE: 20 gauge not available in doors larger than 3'6" width and 7'2" length.

SWINGERDOR
January 2007



MESKER
www.meskerdoor.com
256-851-6670, 256-852-5846

TECHNICAL DATA SHEET

DS-101-2

GENERAL INFORMATION

1. Rating "A" label – 3 hour, "B" label – 1 ½ hour, "C" label – ¾ hour, "D" label – 1 ½ hour and "E" label – ¾ hour.
2. Glass permitted. "B" label – 100 square inches per leaf maximum. Dimensions may not exceed 12" in width or 33" in length. "C" label – 1296 square inches per light, neither dimension may exceed 54". "E" label – 1296 square inches per light, neither dimension may exceed 54". (No glass is permitted in "A" and "D" label doors except 100 square inches in "A" label doors with special glass and glazing.)
3. Temperature rise doors: 250° temperature rise rating not applicable on "C" and "E" label doors due to large glass areas.
4. Fire exit device labels must be attached to door when used with labeled and listed fire exit hardware.
5. All doors listed in pairs can be used with single point lock and automatic flush bolts or vertical rod and mortise panic devices with flush bolts on inactive.

ENGINEERING DATA – CORE MATERIALS

CORE MATERIALS	POLYSTYRENE	HONEYCOMB	URETHANE	FIBERBOARD
PHYSICAL PROPERTIES DENSITY	1.4 PCF	1.2 PCF	2.05 PCF	17.0 PCF
COMP. STRENGTH	23 PSI	30 PSI	27 PSI	100 PSI
COEF. OF EXP./°F	<1 1/2%/VOL.	N/A	N/A	2% WGT.
SOUND TRANSMISSION (STC) 20 GA. FACE SHEETS	25	30	N/A	29
18 GA. FACE SHEETS	27	31	29	32
THERMAL PROPERTIES "R" FACTOR	.22	1.0	.14	.51
"U" FACTOR	.20	.41	.075	.28
FIRE HAZARD CLASS. FUEL CONTRIBUTED	0	N/A	N/A	30
SMOKE DEVELOPED	50-85	N/A	N/A	0
SERVICE TEMPERATURE RANGE	-65° – 190°F	-65° – 200°F	-65° – 200°F	-50° – 250°F

STANDARD HARDWARE PREPARATIONS

Lock Preparation – Government 161 cylindrical lock (2 3/4 backset) reinforced as in detail G1, DS-113. Government 86 mortise lock (2 3/4 backset) reinforced as in detail G2, DS-113.

Hinge Preparations – 4 1/2" x 4 1/2" standard weight template hinges, 1 1/2" pair on 6'8", 7'0" and 7'2" doors, 2 pair on 7'10" and 8'0" doors.

Surface Mounted Hardware – Doors are factory reinforced for surface mounted hardware when specified. Mounting holes are drilled and tapped in field by others.

Universal Handing – Swingerdoors will fit both right and left hand openings due to the double hole pattern and reversible hinge filler.

Pairs of Doors – Pairs of doors may be supplied with astragals when specified. See DS-157 for details.

Packaging – Each door is packed in individual corrugated cardboard cartons clearly identified as to its contents.

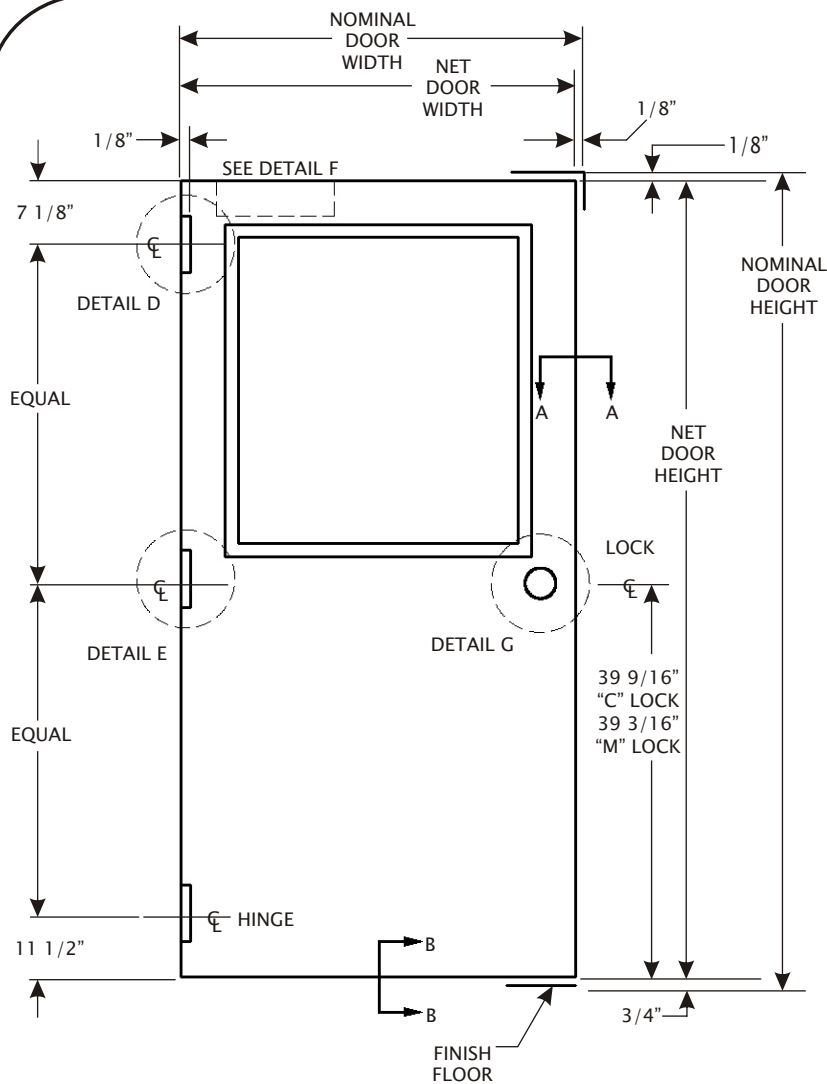
SWINGERDOR
January 2007



MESKER
www.meskerdoor.com
256-851-6670, 256-852-5846

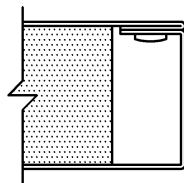
TECHNICAL DATA SHEET

DS-101-3



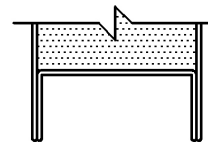
STANDARD DOOR WIDTHS	
NOMINAL DOOR WIDTHS	NET DOOR WIDTHS
2'-0"	23 3/4"
2'-4"	27 3/4"
2'-6"	29 3/4"
2'-8"	31 3/4"
3'-0"	35 3/4"
3'-4"	39 3/4"
3'-6"	41 3/4"
3'-8"	43 3/4"
3'-10"	45 3/4"
4'-0"	47 3/4"

STANDARD DOOR HEIGHTS	
NOMINAL DOOR HEIGHTS	NET DOOR HEIGHTS
6-8"	79 1/8"
7'-0"	83 1/8"
7'-2"	85 1/8"
7'-10"	93 1/8"
8'-0"	95 1/8"



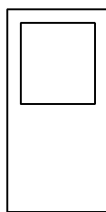
SECTION A-A

MECHANICALLY INTERLOCKED HEMMED SQUARE EDGE

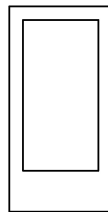


SECTION B-B

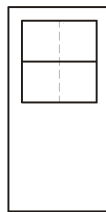
16 GAUGE TOP AND BOTTOM CHANNEL



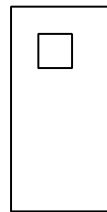
G



FG



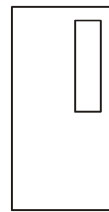
G2-G4



V



L



N

SWINGER DOOR
January 2007



MESKER
www.meskerdoor.com
256-851-6670, 256-852-5846